

G500 Undercounter Glasswasher

Technical Specifications



CLASSEQ
Warewashing Made Simple.

G500

Front loading commercial glasswasher with two minute wash cycle and simple two button controls for effortless, consistently clean results.

The G500 is an easy to operate glasswasher with a 500 x 500mm basket that holds 25 pint-sized glasses. With its 1.5 and 2 minute wash cycle, this machine is capable of cleaning up to 1000 glasses per hour.

The digital LCD display accurately shows the temperature of the wash tank and rinse boiler, reassuring the operator that it is up to temperature and fully sanitising during the wash cycle.

With intuitive colour coded lighting and universally recognised symbols, this machine is incredibly easy to use, plus features performance enhancing customisations through its advanced settings modes. Additionally, its clever software constantly monitors wash cycles, temperatures, chemical usage and any errors giving valuable data which is used to improve operational efficiencies.

The G500 comes as standard with a gravity drain, which is suitable in instances where the machine is above the waste outlet. The optional drain pump (G500P) is essential where the drainage is either higher than the machines waste outlet, or has to be pumped to a stand pipe.



Drain Pump

Our G500 is also available with an (Optional) Drain Pump. Model code: G500P.

Warewashing made simple:



Locally manufactured

Our machines are Made in Britain (Staffordshire) meaning shorter lead times on delivery, parts and support.



1.5 and 2 Minute Cycle Time

The G500 1.5 and 2 minute cycle allows for maximum output without compromising wash quality.



LCD Display

The G500 enhances user functionality by displaying rinse and wash tank temperatures.



Advanced Customer Features

Adjust rinse aid and detergent settings and priming of chemical pumps.



Colour Coded Display

Amber flashing - Machine heating
Blue - Machine in cycle
Green - Machine ready



Operational Monitoring

Our machine constantly monitors heating and water usage to improve the efficiency.

Machine Features:

1 500mm x 500mm basket	2 Built-in chemical pumps	3 Energy saving standby mode	4 Removable basket guides
5 Dual filter system	6 Temperature interlock - guarantees hot rinse	7 Assisted self-clean	8 Noise reducing double skinned door

Hydraulic specifications

Water supply connection	G3/4" (3/4" BSP)
Minimum allowed supply water pressure	2.0 bar
Required water flow rate	11 L/min
Minimum incoming water temperature	4°C
Maximum incoming water temperature	55°C
Gravity drain height (from machine base)	40 mm
(Optional) Pumped drain height (from machine base)	600 mm
Drain size	Ø40 mm

Electrical specifications

Standard Set-up

Amps Required	30A (1 phase)
Standard Operating Voltage	220-240V / 1N~ / 50Hz
Total Connected Load	6.58kW

Optional Set-up

Amps Required	13A (3 phase)
Standard Operating Voltage	380-415V / 3N-/50Hz
Total Connected Load	6.58kW

Optional Set-up

Amps Required	12A (1 phase)
Standard Operating Voltage	220-240V / 1N~ / 50Hz
Total Connected Load	2.58kW

Performance

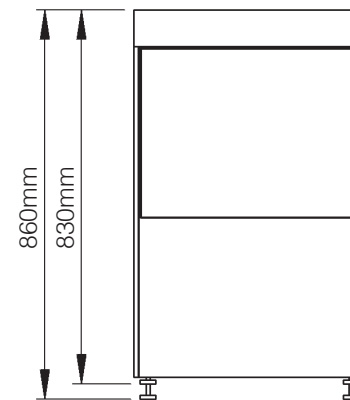
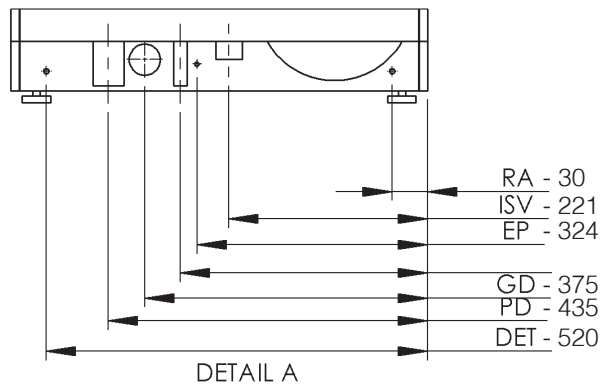
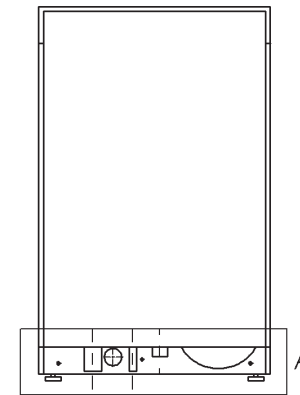
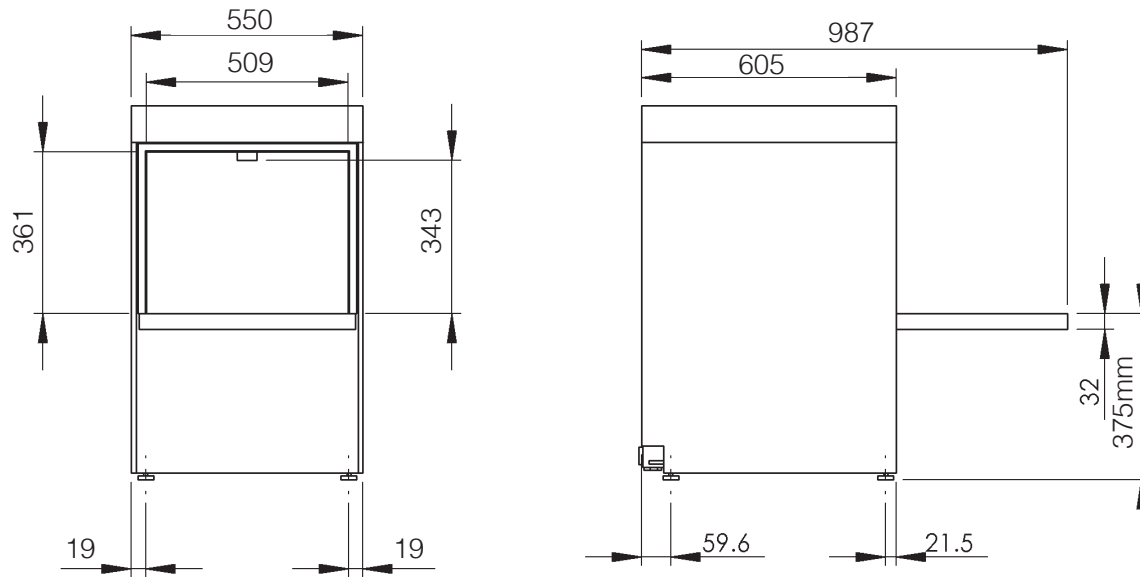
Wash tank element	2.00kW
Rinse tank element	6.00kW
Wash tank capacity	14.5 litres
Rinse tank capacity	7.5 litres
Rinse water consumption at 3 bar	3.00 L/cycle
Theoretical maximum racks/hours	40
Wash tank temperature	55°C
Rinse tank temperature	70°C
Wash pump power	0.58 kW
Rinse pump power	N/A

Please Note: G500P Specification as above.

Mechanical Specifications

Additional Info:

Wash water temperature	55°C
Glass washer rinse temperature	70°C
Noise level	Under 70dB
Empty weight	44kg
Fully Loaded weight	64.5kg
Packed weight	57.6kg



Dimensions (mm):

(Closed Door) 410 (W) x 644 (H) (674 max) x 605 (D)
 (Open Door) 570 (W) x 830 (H) (860 max) x 987 (D)

Description	Symbol	Radius from machine (m)
Rinse aid tube	RA	3
Inlet solenoid valve	ISV	1.8
Mains electrical cable	EC	1.3
Pumped waste water outlet	PD	1.5
Equipotential bonding stud	EP	-
Detergent tube	DET	3

Please Note: All dimensions in mm

Contact:

Tel: +44 (0)844 225 9250
 Email: sales@classeq.co.uk

Classeq Ltd, Roebuck Way,
 Knowlhill, Milton Keynes MK5 8WH

www.classeq.co.uk

CLASSEQ
 Warewashing Made Simple.